

PRODUCT ID: 6215

Outdoor Blank-out LED Direct-view Sign

MODEL

TCL742GGR-256/120-277VAC



DIMENSIONS

7" H x 42" W x 2.5" D (est. 11.808 lbs)

CLASS

CLASS: TCL Series

Control Method: Switch (not included) or external relay.

CONSTRUCTION

Cabinet: 1-piece, corrosion resistant, extruded all-weather frame, 2.5" deep.

Face Material: 1/8" impact resistant, smoke-tinted polycarbonate (5109)

Faces: Single Faced Sign

Finish: Duranodic Bronze

Mounting Channel: None

ELECTRICAL

Flashing: Not Included

Input Voltage: 120-277 VAC

UL/cUL Listed: Listed for wet locations

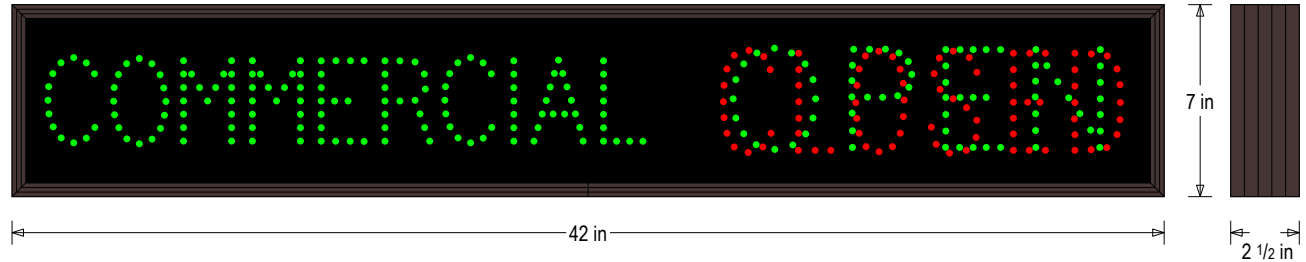
MESSAGE

Illumination: Super bright direct view LEDs. Message blanks out when off.

Sign Messages: See message table below

Product View

NOTE: Sign image may not exactly represent the finished product. For illustration purposes only.



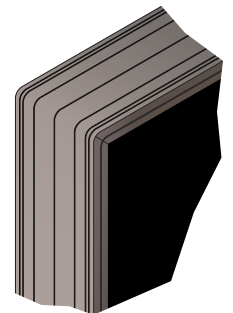
| MESSAGE | LED/COLOR | HEIGHT | AMPS |
|------------|----------------------|--------|-------------|
| COMMERCIAL | Green Wide Angle LED | 2.875" | 0.115-0.050 |
| OPEN | Green Wide Angle LED | 3.5" | 0.055-0.024 |
| CLOSED | Red Wide Angle LED | 3.5" | 0.041-0.018 |

NOTE: Above messages are independently controlled.

Sample Display Options



Frame Detail



iSIGNS Inc.
7625 Birkmire Drive
Fairview, PA 16415
Phone: 866-437-3040
Website: www.isignsled.com



Proudly Made in the USA