

# PRODUCT ID: 51200

## Outdoor Blank-out LED Direct-view Sign

### MODEL

TCL77GGG-M032/12-24VDC



### DIMENSIONS

7" H x 7" W x 2.5" D (est. 3.337 lbs)

### CLASS

CLASS: TCL Series

Control Method: Switch (not included) or external relay.

### CONSTRUCTION

Cabinet: 1-piece, corrosion resistant, extruded all-weather frame, 2.5" deep.

Face Material: 1/8" impact resistant, smoke-tinted polycarbonate (5109)

Faces: Single Faced Sign

Finish: Duranodic Bronze

Mounting Channel: None

### ELECTRICAL

Flashing: Not Included

Input Voltage: 12-24 VDC

UL/cUL Listed: Listed for wet locations

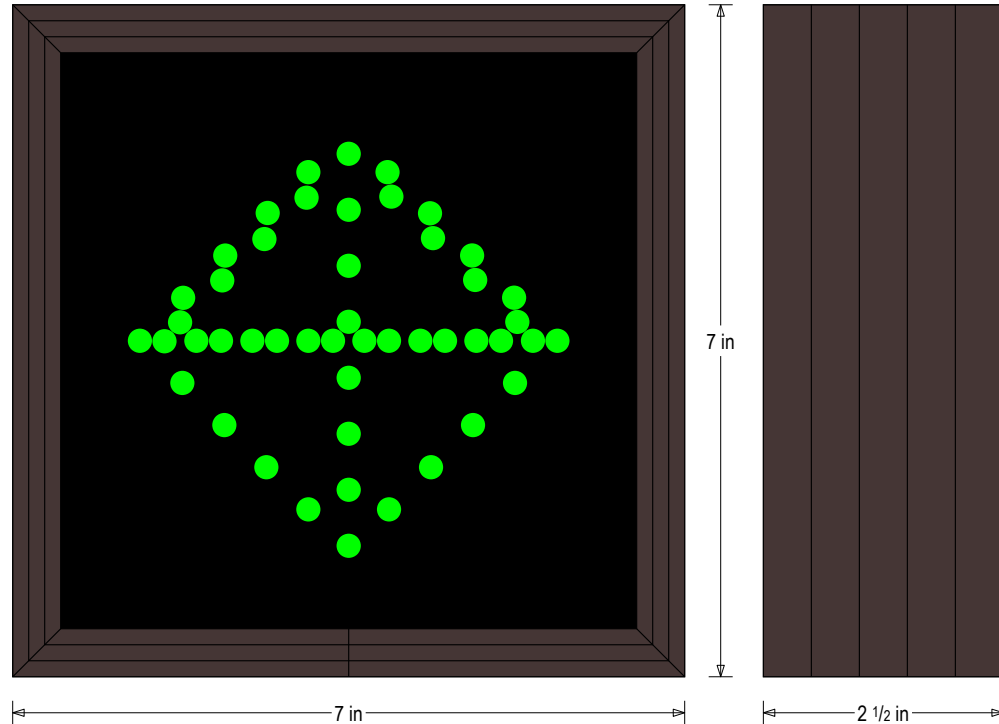
### MESSAGE

Illumination: Super bright direct view LEDs. Message blanks out when off.

Sign Messages: See message table below

## Product View

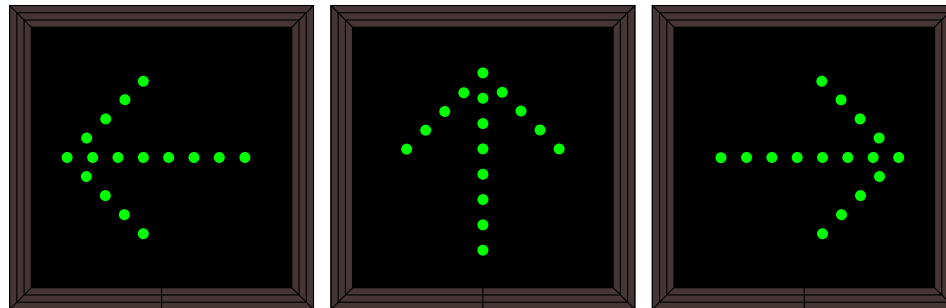
NOTE: Sign image may not exactly represent the finished product. For illustration purposes only.



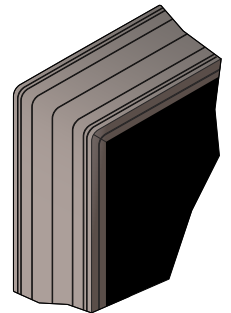
MESSAGE	LED/COLOR	HEIGHT	AMPS
Left Arrow	Green Wide Angle LED	3.5"	0.147-0.073
Up Arrow	Green Wide Angle LED	4.125"	0.147-0.073
Right Arrow	Green Wide Angle LED	3.5"	0.147-0.073

NOTE: Above messages are independently controlled.

### Sample Display Options



### Frame Detail



### iSIGNS Inc.

7625 Birkmire Drive

Fairview, PA 16415

Phone: 866-437-3040

Website: [www.isignsled.com](http://www.isignsled.com)



Proudly Made in the USA