

PRODUCT ID: 47586

Outdoor Blank-out LED Direct-view Sign

MODEL

TCL3414GG-1429/120-277VAC



DIMENSIONS

34" H x 14" W x 7.5" D (est. 9.943 lbs)

CLASS

CLASS: TCL Series

Control Method: Switch (not included) or external relay.

CONSTRUCTION

Cabinet: 1-piece, corrosion resistant, extruded all-weather frame, 2.5" deep.

Face Material: 1/8" impact resistant, smoke-tinted polycarbonate (5109)

Faces: Single Faced Sign

Finish: Duranodic Bronze

Mounting Channel: None

ELECTRICAL

Flashing: Not Included

Input Voltage: 120-277 VAC

UL/cUL Listed: Listed for wet locations

MESSAGE

Illumination: Super bright direct view LEDs. Message blanks out when off.

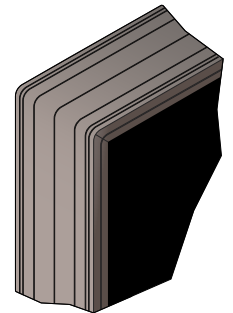
Sign Messages: See message table below

Product View

NOTE: Sign image may not exactly represent the finished product. For illustration purposes only.



Frame Detail



MESSAGE

LED/COLOR

HEIGHT

AMPS

OPEN w/ Down Left Arrow	Green Wide Angle LED	3.5", 3.0"	0.069-0.030
OPEN w/ Down Right Arrow	Green Wide Angle LED	3.5", 3.0"	0.069-0.030

NOTE: Above messages are independently controlled.

iSIGNS Inc.

7625 Birkmire Drive

Fairview, PA 16415

Phone: 866-437-3040

Website: www.isignsled.com



iSIGNS

innovative sign technologies

Proudly Made in the USA