

## PRODUCT ID: 34655

### Outdoor Blank-out LED Direct-view Sign

#### MODEL

TCL1434GG-H825/120-277VAC



#### DIMENSIONS

14" H x 34" W x 2.5" D (est. 7.783 lbs)

#### CLASS

CLASS: TCL Series

Control Method: Switch (not included) or external relay.

#### CONSTRUCTION

Cabinet: 1-piece, corrosion resistant, extruded all-weather frame, 2.5" deep.

Face Material: 1/8" impact resistant, smoke-tinted polycarbonate (5109)

Faces: Single Faced Sign

Finish: Duranodic Bronze

Mounting Channel: None

#### ELECTRICAL

Flashing: Not Included

Input Voltage: 120-277 VAC

UL/cUL Listed: Listed for wet locations

#### MESSAGE

Illumination: Super bright direct view LEDs. Message blanks out when off.

Sign Messages: See message table below

## Product View

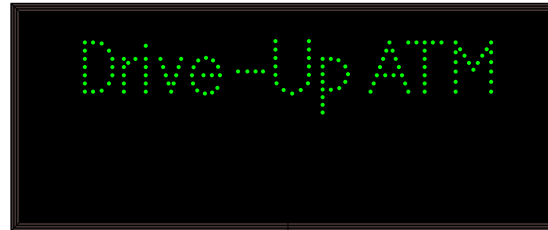
NOTE: Sign image may not exactly represent the finished product. For illustration purposes only.



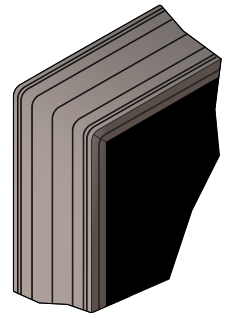
MESSAGE	LED/COLOR	HEIGHT	AMPS
Drive-Up ATM	Green Wide Angle LED	3.25"	0.105-0.046
with Teller Assist	Green Wide Angle LED	3.25"	0.144-0.062

NOTE: Above messages are independently controlled.

### Sample Display Options



### Frame Detail



iSIGNS Inc.  
7625 Birkmire Drive  
Fairview, PA 16415  
Phone: 866-437-3040  
Website: [www.isignsled.com](http://www.isignsled.com)



Proudly Made in the USA