

PRODUCT ID: 31595

Outdoor Blank-out LED Direct-view Sign

MODEL

TCL217RRR-226H

DIMENSIONS

21" H x 7" W x 2.5" D (est. 5.69 lbs)

CLASS

CLASS: TCL Series

Control Method: Switch (not included) or external relay.

CONSTRUCTION

Cabinet: 1-piece, corrosion resistant, extruded all-weather frame, 2.5" deep.

Face Material: Injection molded, impact resistant Lexan® hood with Lexan® lenses

Faces: Single Faced Sign

Finish: Duranodic Bronze

Mounting Channel: None

ELECTRICAL

Flashing: Not Included

Input Voltage: 120-277 VAC

UL/cUL Listed: Listed for wet locations

MESSAGE

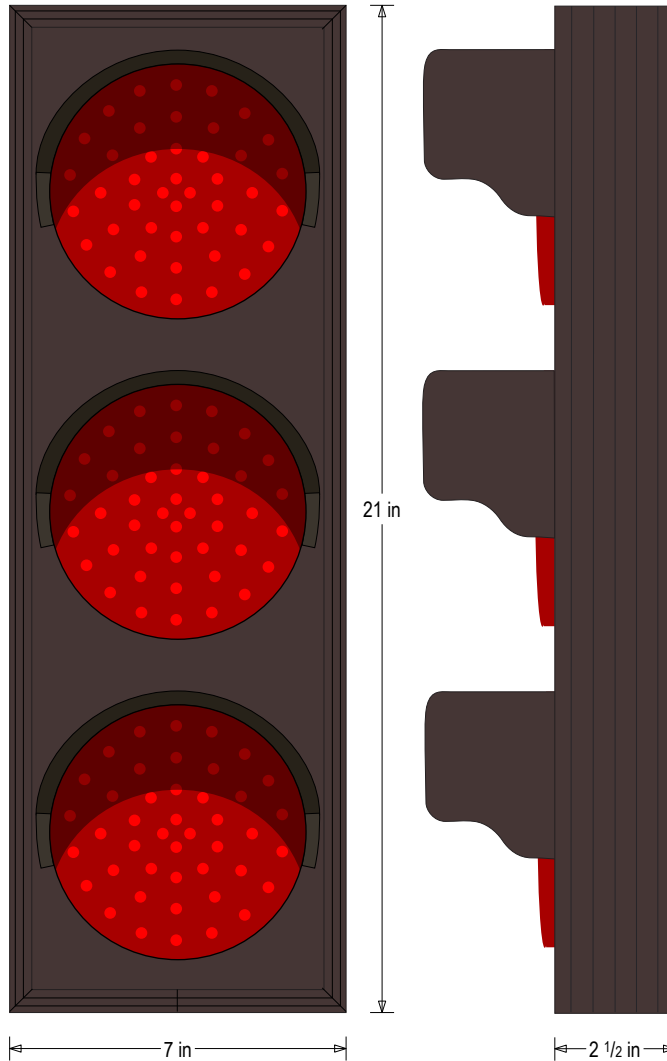
Illumination: Super bright direct view LEDs. Message blanks out when off.

Sign Messages: See message table below

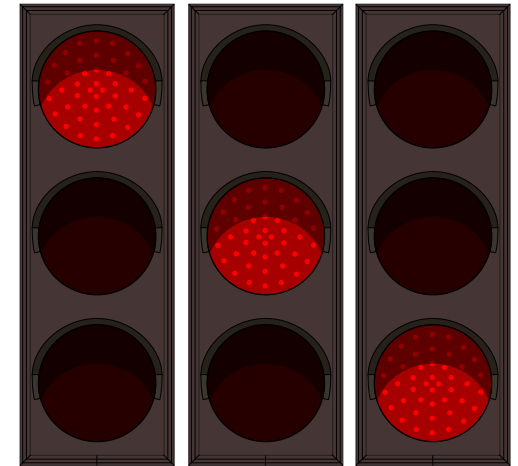


Product View

NOTE: Sign image may not exactly represent the finished product. For illustration purposes only.



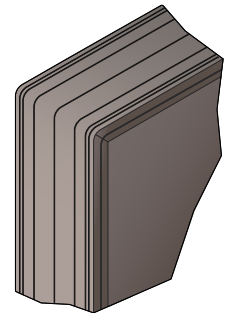
Sample Display Options



MESSAGE	LED/COLOR	HEIGHT	AMPS
Red Indicator Dot	Red Wide Angle LED	5.0"	0.033-0.014
Red Indicator Dot	Red Wide Angle LED	5.0"	0.033-0.014
Red Indicator Dot	Red Wide Angle LED	5.0"	0.033-0.014

NOTE: Above messages are independently controlled.

Frame Detail



iSIGNS Inc.

7625 Birkmire Drive

Fairview, PA 16415

Phone: 866-437-3040

Website: www.isignsled.com



Proudly Made in the USA