

## PRODUCT ID: 40672

### Outdoor Blank-out LED Backlit Sign

#### MODEL

PHX1418GG-K539/120-277VAC



#### DIMENSIONS

14" H x 18" W x 2.25" D (est. 7.962 lbs)

#### CLASS

Class: PHX Series

Control Method: Switch (not included) or external relay.

#### CONSTRUCTION

Cabinet: 1-piece, corrosion resistant, extruded all-weather frame, 2.25" deep.

Face Material: 1/8" thick, dark grey diffused acrylic

Faces: Single Faced Sign

Finish: Duranodic Bronze

Graphic: Printed graphic applied to surface

Mounting Channel: None

#### ELECTRICAL

Flashing: Not Included

Input Voltage: 120-277 VAC

UL/cUL Listed: Listed for wet locations

#### MESSAGE

Color: Black opaque

Font: Swiss 721 Bold BT

Illumination: Backlit with high intensity LEDs. Message blanks out when off

Sign Messages: See message table below

## Product View

NOTE: Sign image may not exactly represent the finished product. For illustration purposes only.

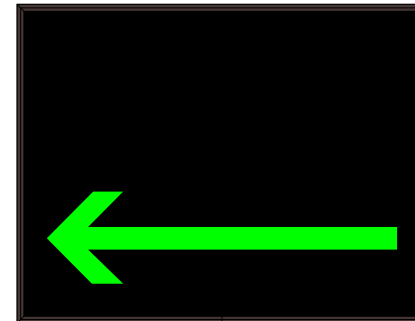


MESSAGE	LED/COLOR	HEIGHT	AMPS
---------	-----------	--------	------

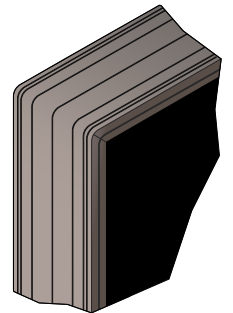
PARKING	Green Wide Angle LED	3.5"	0.195-0.084
Left Arrow	Green Wide Angle LED	4.0"	0.195-0.084

NOTE: Above messages are independently controlled.

### Sample Display Options



### Frame Detail



#### iSIGNS Inc.

7625 Birkmire Drive

Fairview, PA 16415

Phone: 866-437-3040

Website: [www.isignsled.com](http://www.isignsled.com)



Proudly Made in the USA