

PRODUCT ID: 6295

Outdoor Blank-out LED Direct-view Sign

MODEL

TCL77R-224/120-277VAC



DIMENSIONS

7" H x 7" W x 2.5" D (est. 2.014 lbs)

CLASS

CLASS: TCL Series

Control Method: Switch (not included) or external relay.

CONSTRUCTION

Cabinet: 1-piece, corrosion resistant, extruded all-weather frame, 2.5" deep.

Face Material: 1/8" impact resistant, smoke-tinted polycarbonate (5109)

Faces: Single Faced Sign

Finish: Duranodic Bronze

Mounting Channel: None

ELECTRICAL

Flashing: Factory setting 55fpm.

Input Voltage: 120-277 VAC

UL/cUL Listed: Listed for wet locations

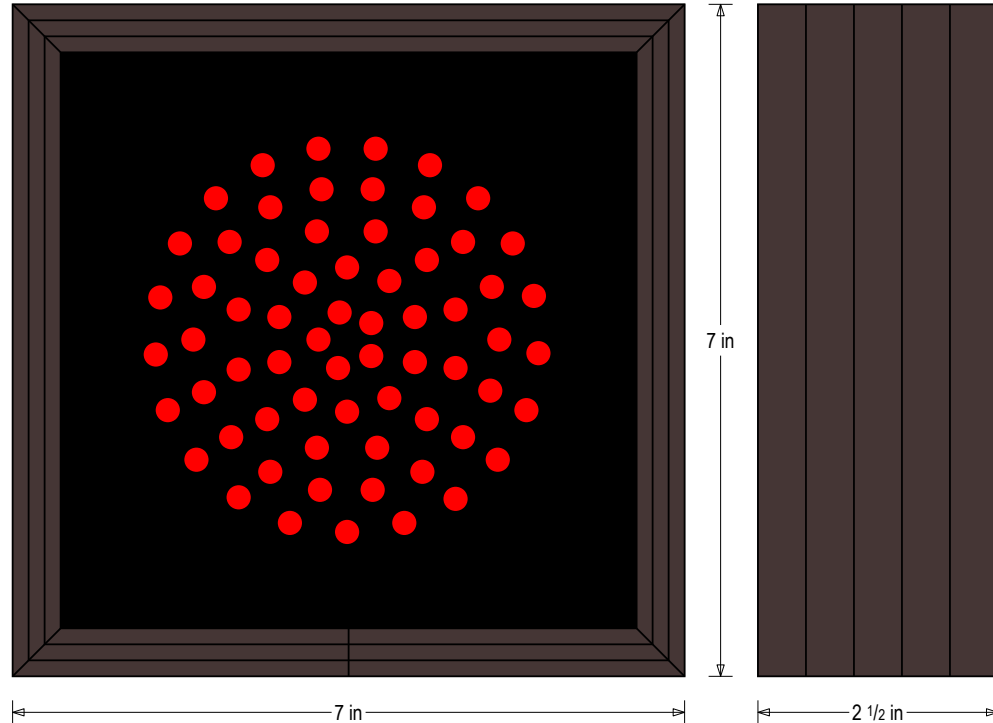
MESSAGE

Illumination: Super bright direct view LEDs. Message blanks out when off.

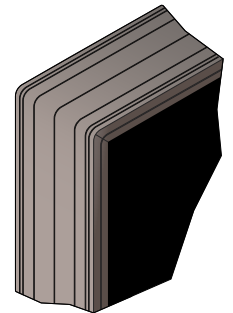
Sign Messages: See message table below

Product View

NOTE: Sign image may not exactly represent the finished product. For illustration purposes only.



Frame Detail



| MESSAGE | LED/COLOR | HEIGHT | AMPS |
|---------|-----------|--------|------|
|---------|-----------|--------|------|

| | | | |
|------------------------------|---------------------|------|-------------|
| Red Indicator Dot | Red Wide Angle LEDs | 4.0" | 0.033-0.014 |
| Red Indicator Dot (Flashing) | Red Wide Angle LEDs | 4.0" | 0.033-0.014 |

NOTE: Above messages are independently controlled.

iSIGNS Inc.

7625 Birkmire Drive

Fairview, PA 16415

Phone: 866-437-3040

Website: www.isignsled.com



Proudly Made in the USA