

# PRODUCT ID: 35728

## Outdoor Blank-out LED Direct-view Sign

### MODEL

TCL2042GR-I961/120-277VAC



### DIMENSIONS

20" H x 42" W x 2.5" D (est. 2733.64 lbs)

### CLASS

CLASS: TCL Series

Control Method: Switch (not included) or external relay.

### CONSTRUCTION

Cabinet: 1-piece, corrosion resistant, extruded all-weather frame, 2.5" deep.

Face Material: 1/8" impact resistant, smoke-tinted polycarbonate (5109)

Faces: Single Faced Sign

Finish: Duranodic Bronze

Mounting Channel: None

### ELECTRICAL

Flashing: Not Included

Input Voltage: 120-277 VAC

UL/cUL Listed: Listed for wet locations

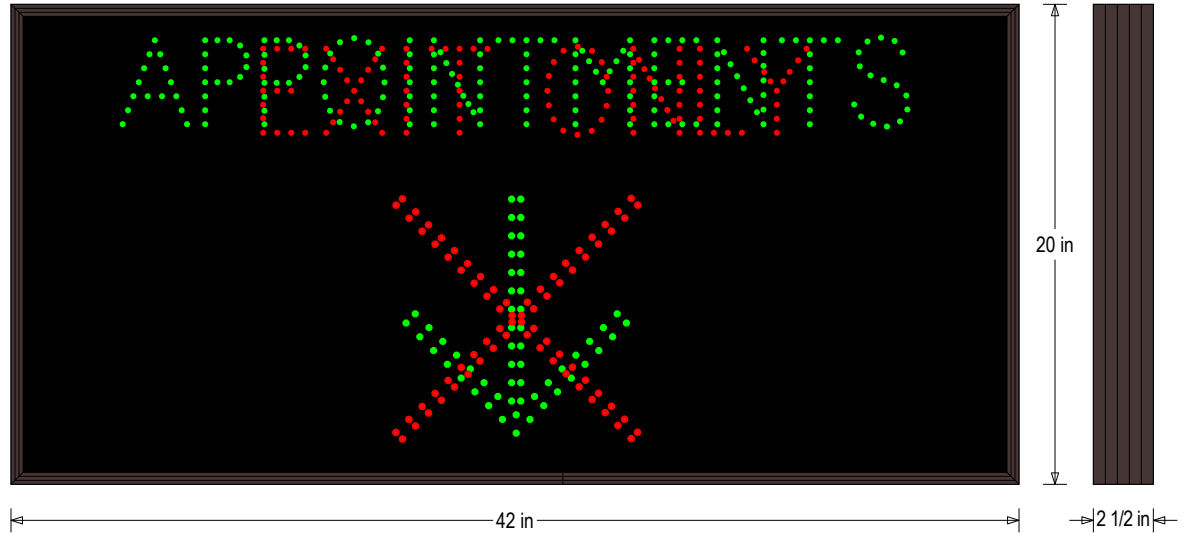
### MESSAGE

Illumination: Super bright direct view LEDs. Message blanks out when off.

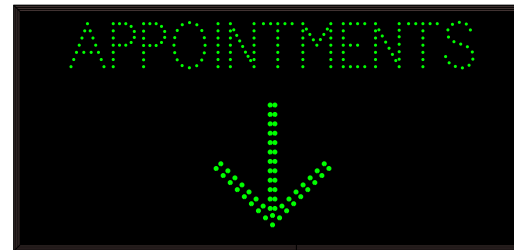
Sign Messages: See message table below

## Product View

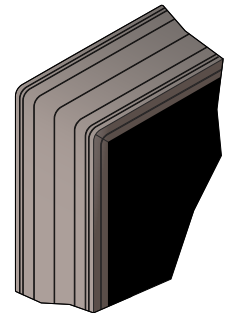
NOTE: Sign image may not exactly represent the finished product. For illustration purposes only.



### Sample Display Options



### Frame Detail



MESSAGE	LED/COLOR	HEIGHT	AMPS
APPOINTMENTS w/Down Arrow	Green Wide Angle LED	3.5", 9.0"	0.173-0.075
EXIT ONLY X	Red Wide Angle LED	3.5", 9.0"	0.080-0.035

NOTE: Above messages are independently controlled.

### iSIGNS Inc.

7625 Birkmire Drive

Fairview, PA 16415

Phone: 866-437-3040

Website: [www.isignsled.com](http://www.isignsled.com)



# iSIGNS

innovative sign technologies inc.

Proudly Made in the USA