

## PRODUCT ID: 18026

### Outdoor Blank-out LED Direct-view Sign

#### MODEL

TCL2420RG-D673



#### DIMENSIONS

24" H x 20" W x 2.5" D (est. 16.727 lbs)

#### CLASS

CLASS: TCL Series

Control Method: Switch (not included) or external relay.

#### CONSTRUCTION

Cabinet: 1-piece, corrosion resistant, extruded all-weather frame, 2.5" deep.

Face Material: 1/8" impact resistant, smoke-tinted polycarbonate (5109)

Faces: Single Faced Sign

Finish: Duranodic Bronze

Mounting Channel: None

#### ELECTRICAL

Flashing: Not Included

Input Voltage: 120-277 VAC

UL/cUL Listed: Listed for wet locations

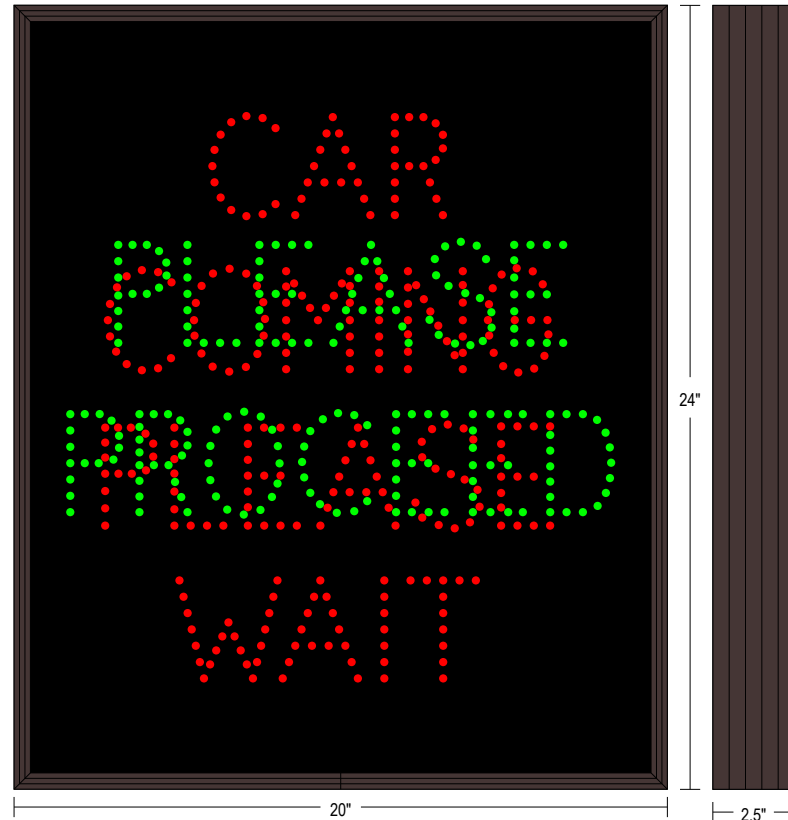
#### MESSAGE

Illumination: Super bright direct view LEDs. Message blanks out when off.

Sign Messages: See message table below

## Product View

NOTE: Sign image may not exactly represent the finished product. For illustration purposes only.



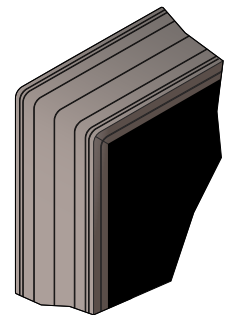
| MESSAGE                | LED/COLOR            | HEIGHT | AMPS        |
|------------------------|----------------------|--------|-------------|
| CAR COMING PLEASE WAIT | Red Wide Angle LED   | 3.0"   | 0.135-0.068 |
| PLEASE PROCEED         | Green Wide Angle LED | 3.0"   | 0.159-0.069 |

NOTE: Above messages are independently controlled.

### Sample Display Options



### Frame Detail



iSIGNS Inc.  
7625 Birkmire Drive  
Fairview, PA 16415  
Phone: 866-437-3040  
Website: [www.isignsled.com](http://www.isignsled.com)



Proudly Made in the USA