

PRODUCT ID: 18638

Outdoor Blank-out LED Direct-view Sign

MODEL

TCL2126GRA-D850/120-277VAC



DIMENSIONS

21" H x 26" W x 2.5" D (est. 17.704 lbs)

CLASS

CLASS: TCL Series

Control Method: Switch (not included) or external relay.

CONSTRUCTION

Cabinet: 1-piece, corrosion resistant, extruded all-weather frame, 2.5" deep.

Face Material: 1/8" impact resistant, smoke-tinted polycarbonate (5109)

Faces: Single Faced Sign

Finish: Duranodic Bronze

Mounting Channel: None

ELECTRICAL

Flashing: Not Included

Input Voltage: 120-277 VAC

UL/cUL Listed: Listed for wet locations

MESSAGE

Illumination: Super bright direct view LEDs. Message blanks out when off.

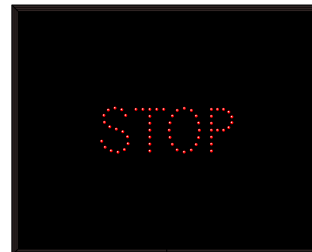
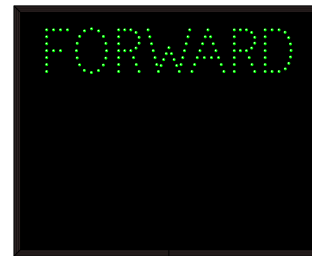
Sign Messages: See message table below

Product View

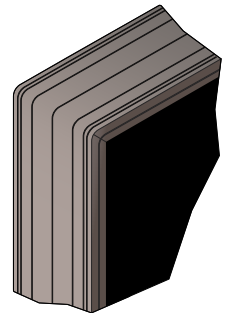
NOTE: Sign image may not exactly represent the finished product. For illustration purposes only.



Sample Display Options



Frame Detail



MESSAGE	LED/COLOR	HEIGHT	AMPS
FORWARD	Green Wide Angle LEDs	3.5"	0.096-0.042
STOP	Red Wide Angle LEDs	3.5"	0.029-0.013
REVERSE	Amber Wide Angle LEDs	3.5"	0.053-0.023

NOTE: Above messages are independently controlled.

iSIGNS Inc.

7625 Birkmire Drive

Fairview, PA 16415

Phone: 866-437-3040

Website: www.isignsled.com



Proudly Made in the USA