

Side Mount SM18-SF

PRODUCT NUMBER

3052

DIMENSIONS

17" H x 4" W x 2" D

INSTALLATION METHOD

Bolted to wall surface with appropriate fasteners.

SYSTEM USES

Available for signs up to 26" wide.

CONSTRUCTION

1/8" thick extruded aluminum angle bracket. Painted Duranodic Bronze.

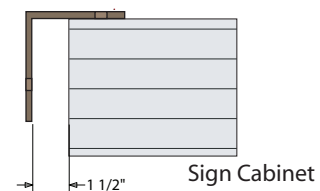
FINISH

Painted Standard Duranodic Bronze. Custom colors available upon request.

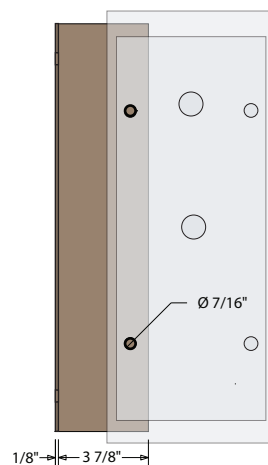
Product View

NOTE: Sign image may not exactly represent the finished product. For illustration purposes only.

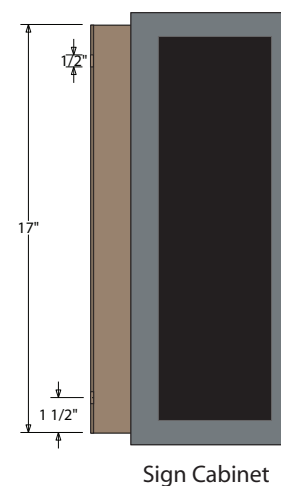
Top View



Back View
Sign Mounting Surface



Front View



Side Mount

- Remove the back panel.
- Mount the ceiling bracket to the desired surface (*Fasteners Not Supplied*).
- Mount the back panel to the bracket (*Fasteners Not Supplied*).
- Hinge cabinet back and replace the screws that were removed in step one on the reverse side.



Note: Make appropriate wiring connections per local codes.

Note: Do not over tighten or distort back panel. Hang the cabinet on the top edge of the back panel