

## PRODUCT ID: 2886

### Post

### MODEL

P40B

### DIMENSIONS

40" H x 6" W x 6" D (est. 5.207 lbs)

### CONSTRUCTION

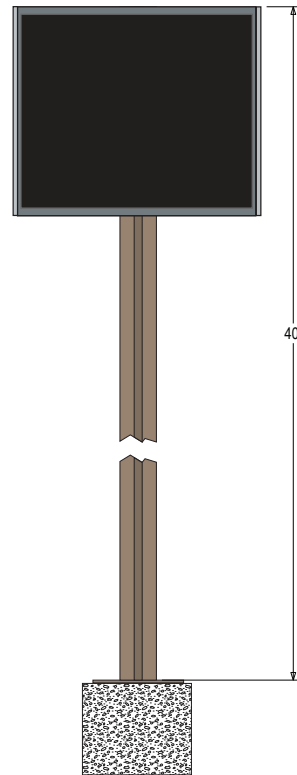
Finish: Duranodic Bronze

Material: 2 1/4" x 3" extruded aluminum post with one sign mounting channel, end cap and 6" sq. welded aluminum base plate. Base plate is 3/16" thick with pre-drilled anchoring holes. Sign mounting hardware and set screw for securing sign to post included.

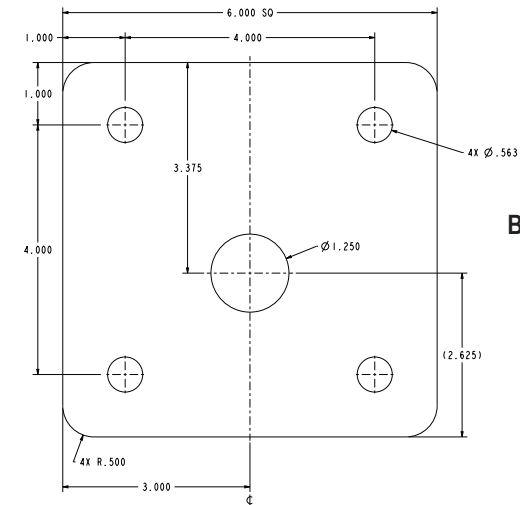
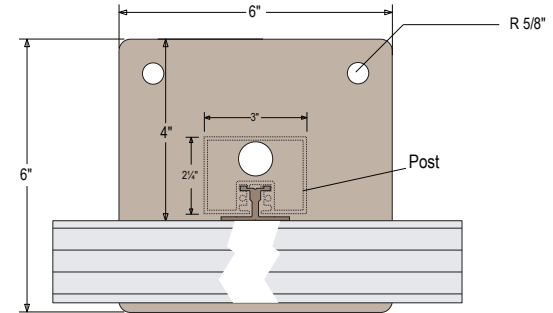
## Product View

NOTE: Sign image may not exactly represent the finished product. For illustration purposes only.

Front View



Top View



Baseplate Detail

iSIGNS Inc.  
7625 Birkmire Drive  
Fairview, PA 16415  
Phone: 866-437-3040  
Website: [www.isignsled.com](http://www.isignsled.com)



Proudly Made in the USA